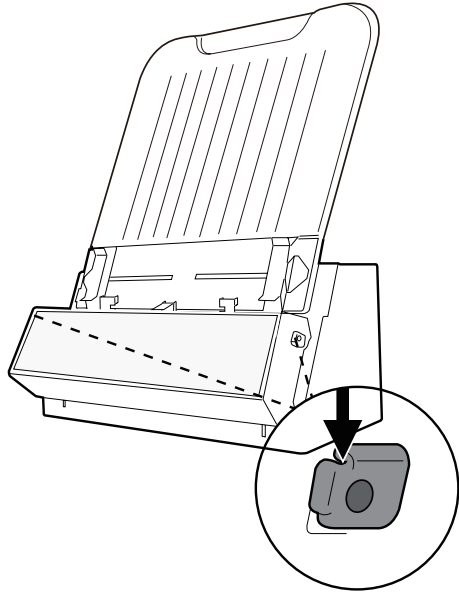


Care and Cleaning

To ensure an optimal performance of your digitizer, it is important to clean several critical parts of the digitizer based on a regular schedule. There is a cleaning cloth come with your package for the purpose to clean the glass surfaces inside your digitizer regularly. Please follow the steps below to perform the cleaning; or, refer to the section “Care and Cleaning” in the User’s Manual for more details.

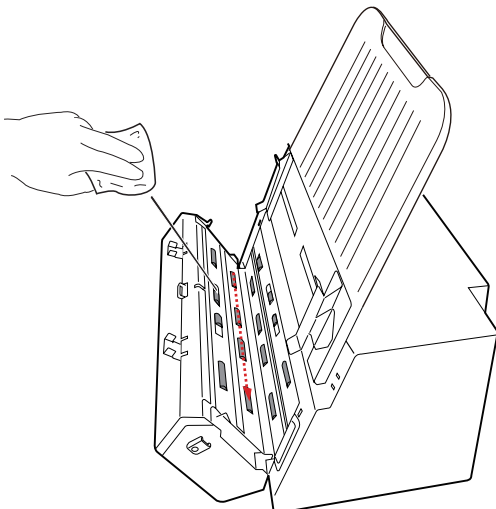
Open the Front Cover

Before start cleaning each component, you have to open the front cover of the digitizer. To open the front cover, push down two Release buttons at both sides of the front cover of the digitizer, as shown in the graphic below.



Cleaning the Rollers

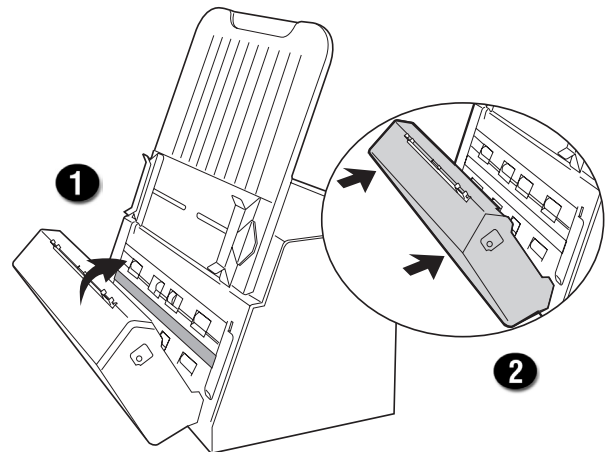
Clean the rollers with a lint-free cloth or a swab moistened with alcohol or ECO cleaner, as shown in the graphic below. Remember to clean all rollers located at the front cover and the digitizer.



Close the Front Cover

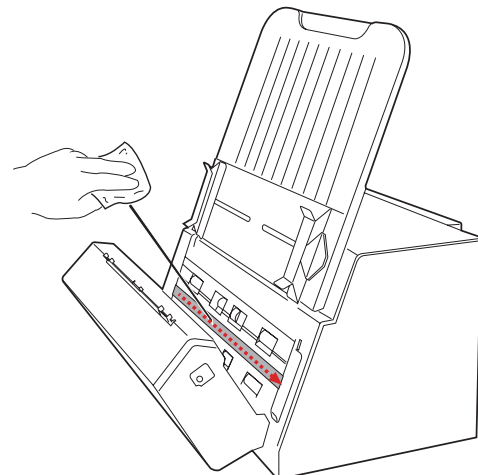
After all cleaning mentioned in this insert has been finished, please follow the steps below to close the front cover of the digitizer:

1. Push the cover forward slightly toward the digitizer.
2. With both hands, gently push two sides of the front cover back into the digitizer until you hear a “click”.



Cleaning the Glass Surface on the inner side of the Digitizer

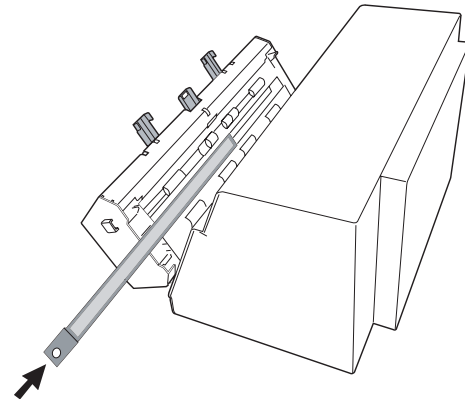
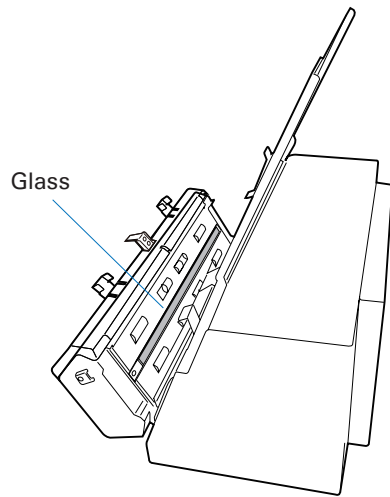
Clean the glass surface on the inner side of the digitizer with the cleaning cloth come with your package or a soft, nonabrasive and lint-free cloth.



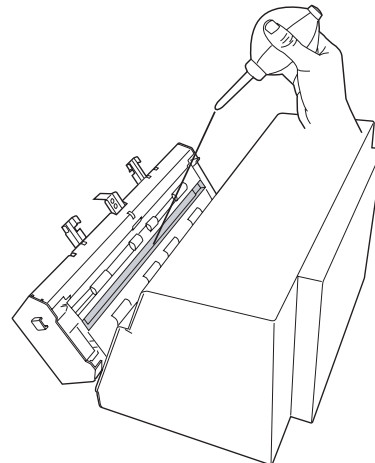
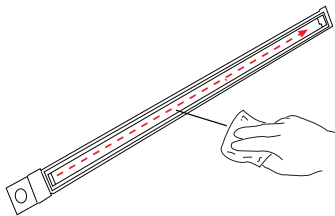
Cleaning the Glass and Components on the Front Cover of the Digitizer

1. Push down two Release buttons to open the front cover. Locate the glass on the inner side of the front cover.
2. Locate a perforation at the left of the glass. Use it to pull out the glass, as shown in the graph below.

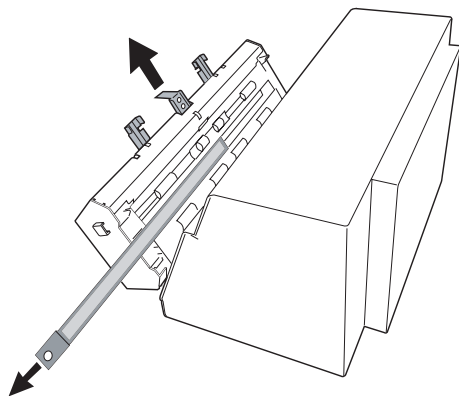
NOTE: Before pulling out the glass, make sure that the Light Shield has been pull up



3. Use the cleaning cloth come with your package or a soft, nonabrasive and lint-free cloth to clean both sides of the glass.
4. Then, use a dust blower or a lint-free cloth to clean components inside the hollow part beneath where the glass is stored.



5. After done, along the tracks, push back the glass until it snaps into place.



NOTE: Do not use any detergents, synthetic cleaning solutions, cleaning naphtha, or other solvents to clean the glass surface or diffuser directly. To remove stains, use cotton swabs moistened with optical lens cleaner (e.g. Purosol Lens Cleaner).